



Republic of the Philippines
Province of Benguet
Municipality of La Trinidad
BARANGAY LUBAS

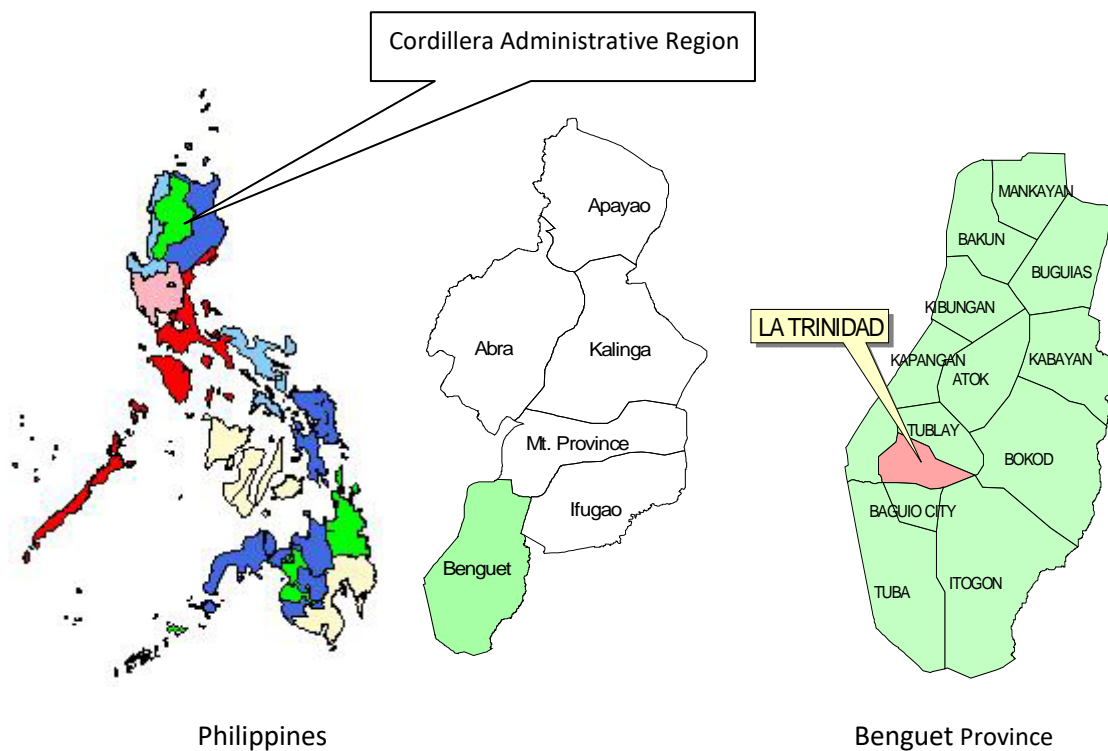
PHYSICAL AND SOCIO-ECONOMIC PROFILE

I. PHYSICAL PROFILE

Geographic Location

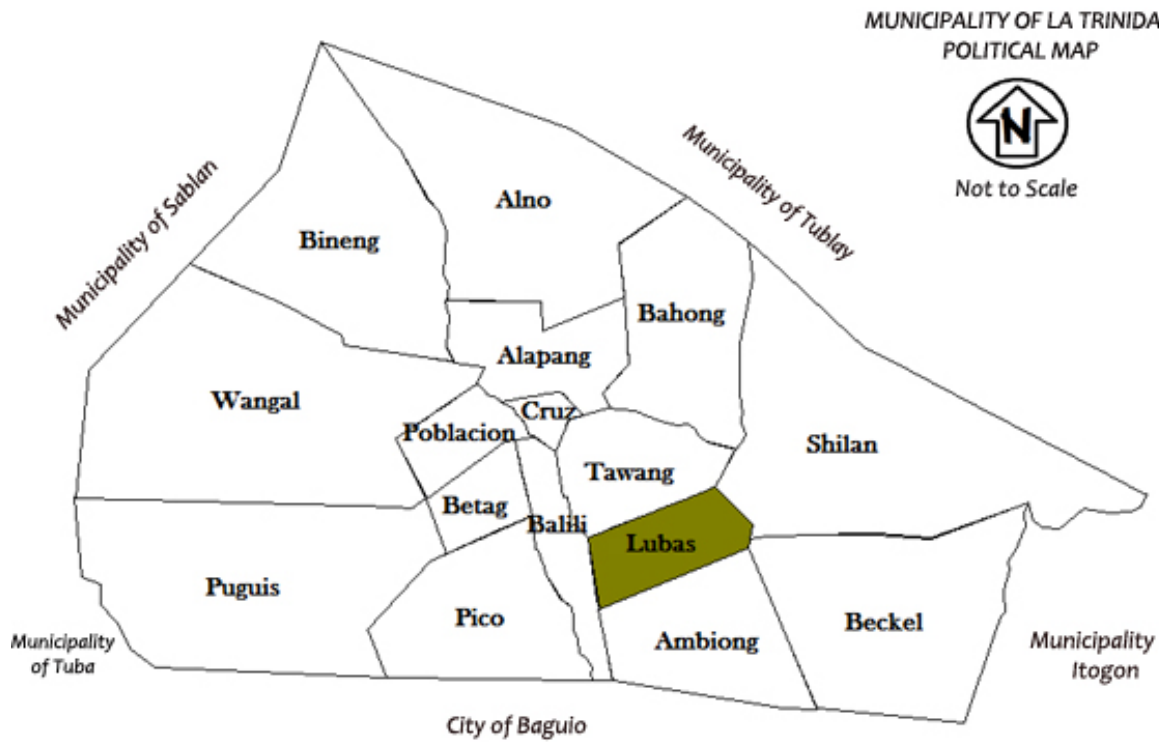
Barangay Lubas is located on the southern part of the municipality of La Trinidad. It is bounded on the north by Barangay Tawang and Shilan, to the south by Barangay Ambiong and Balili, to the east by Barangay Shilan, Beckel and Ambiong and to the west by Barangay Tawang and Balili.

With the rest of the municipality of La Trinidad, it lies at 16°46' north latitude and 120° 59 east longitudes.





Republic of the Philippines
Province of Benguet
Municipality of La Trinidad
BARANGAY LUBAS

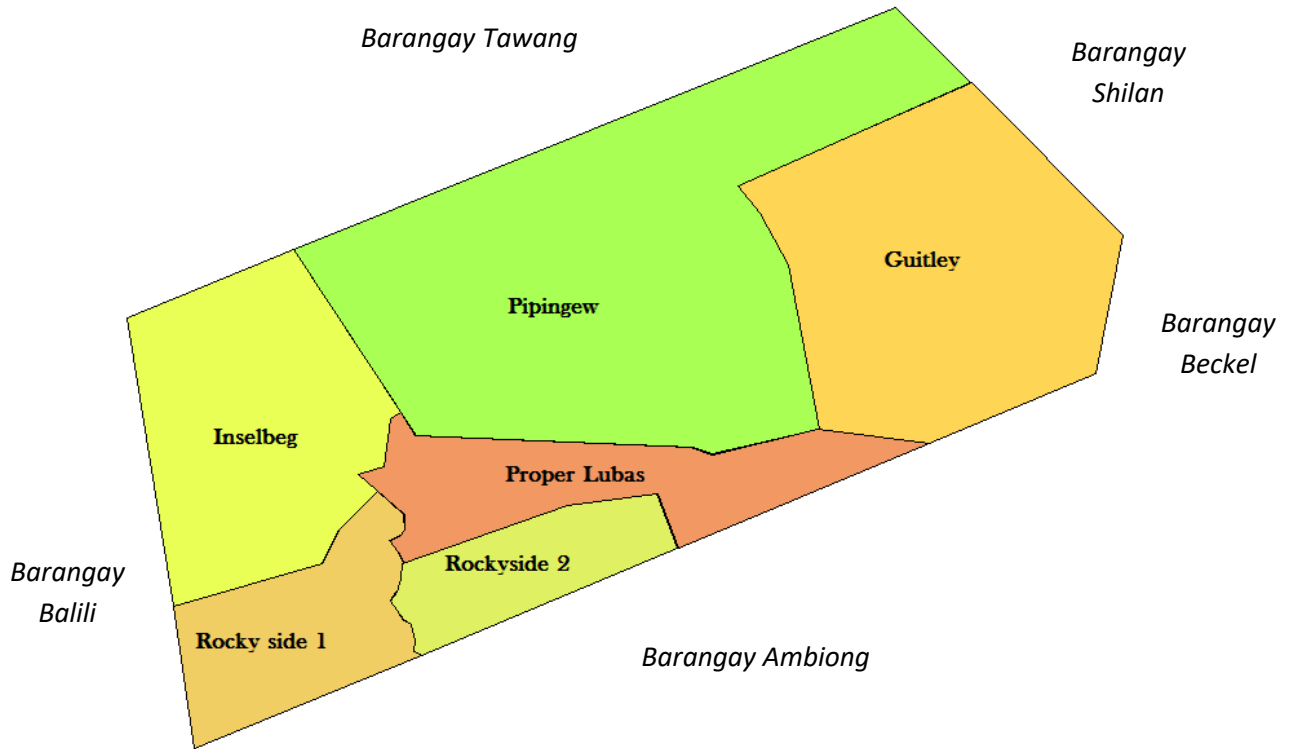


POLITICAL MAP OF BARANGAY LUBAS





Republic of the Philippines
Province of Benguet
Municipality of La Trinidad
BARANGAY LUBAS



Prepared by: MPDO La Trinidad under CBMS project, 2013

Land Area

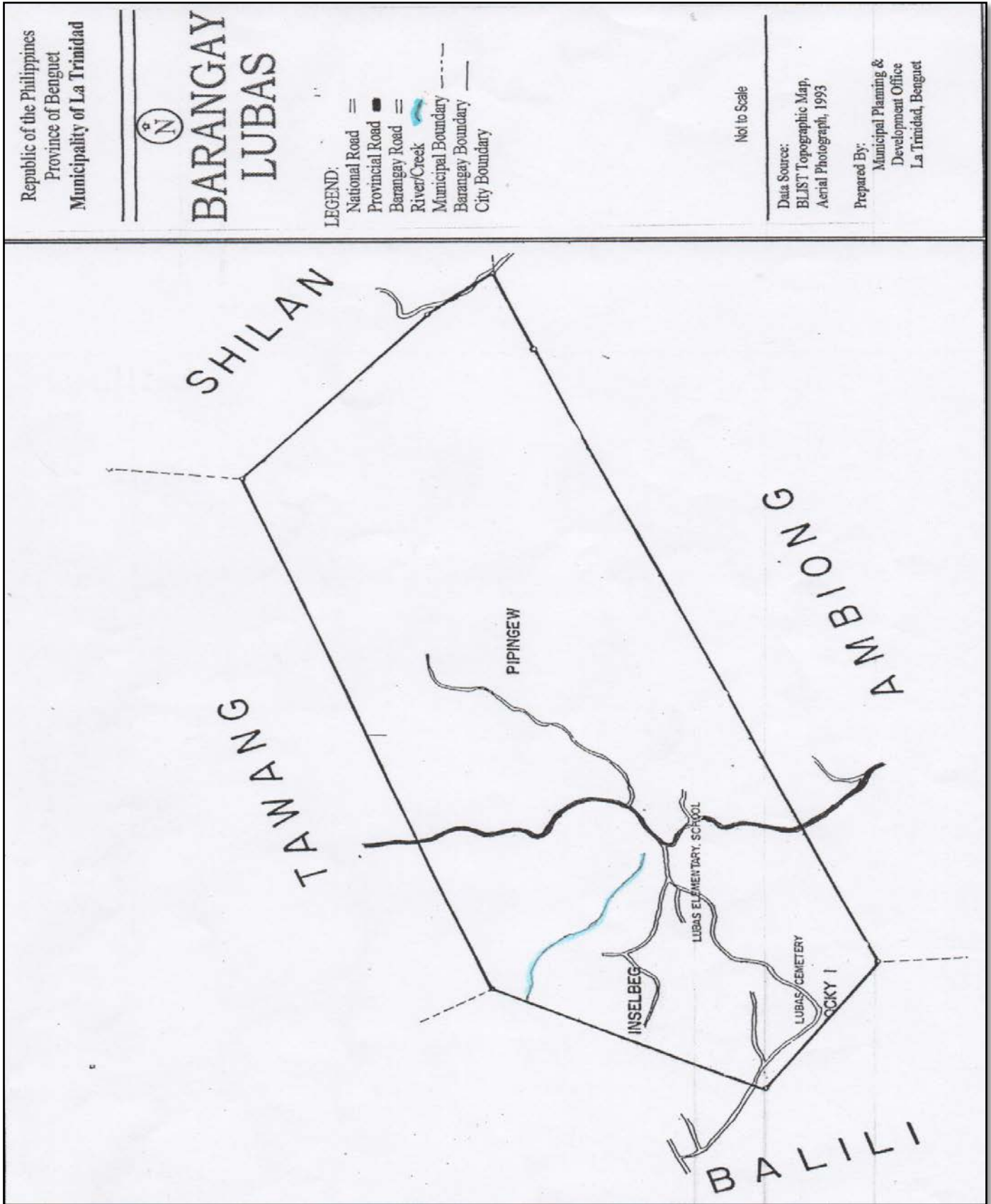
The Department of Environment and Natural Resources (DENR) Cadastral survey reveals that the land area of Lubas is 240.5940 hectares. It is the 5th to the smallest barangays in the municipality occupying three percent (3%) of the total land area of La Trinidad.

Political Subdivisions

The barangay is composed of six sitios namely Rocky Side 1, Rocky Side 2, Inselbeg, Lubas Proper, Pipingew and Guitley. Guitley is the farthest and the highest part of Lubas, connected with the boundaries of Beckel and Ambiong.



Republic of the Philippines
Province of Benguet
Municipality of La Trinidad
BARANGAY LUBAS





Republic of the Philippines
Province of Benguet
Municipality of La Trinidad
BARANGAY LUBAS

Accessibility

In the earlier days, Lubas can only be reached by foot. Until year 1980's when landowners such as the Olantes donated part of their lands for road construction enabling motor vehicles to pass through the barangay. A road was built from Pine Park, Km. 4 connecting to Ambiong road on the right side and Tawang on the left side.

There are four (4) entry points going to the Barangay through a road:

- the Beckel Provincial road connected to Guitley,
- the national road from Ambiong connected to Lubas Proper and Guitley,
- the National road from Tawang connected to Pipingew and,
- the municipal road connected to Rocky Side I and Rocky Side 2.

Public Utility Jeepneys are available at Pines Park.

II. NATURAL AND PHYSICAL CHARACTERISTICS

Climate and Rainfall

The barangay enjoys an average temperature ranging from 14.4 to 23.6 degrees Celsius and Type I weather patterns having two pronounced seasons. The dry season extends from November to April while the rest of the year is considered rainy. The heaviest rains usually occur in the months of August and September. The coldest months are December to February.

Topography and Slope

The topography of the barangay is rolling to moderately steep mountains ranging from 1,200 to 1,600 meters above sea level. There are upland areas in the barangay which has a slope of 9 to 18%.

Soil Type

There are two types of soil found in the barangay. These are Taccian loam and Halsema loam. These types of soil are susceptible to soil erosion. It is still rich with the red clay. The lower part of the barangay is rich in loam, the upper portion of the area is rich with red clay.

Water Bodies

Barangay Lubas has one creek and 10 common springs. The creek is found in Rocky Side II. One of the springs serves as water source for the residents around Lubas Proper and nearby sitios during the time when water supply from the La Trinidad Water District was not available. At present, some households still get their water source from the said spring.

One spring is being utilized by the Seb-Seb water refilling Station water as water source.



Republic of the Philippines
 Province of Benguet
Municipality of La Trinidad
BARANGAY LUBAS

Land Use

More than sixty percent (61.86%) of the total land area of Barangay Lubas is still used for agriculture. Almost 11% is used for institutional purposes where public facilities like schools and churches are built with 26.39 hectares. Forest land occupies 10.79% or 25.96 hectares. There are a few bodies of water in the area with 7.19% or 17.30 hectares. Road networks to and from other nearby barangays and within sitios utilizes 17.73 hectares or 7.37%. It is notable that only 1.80% or 4.33 hectares is used for residential purpose.

<i>Land Use</i>	<i>Areas in Hectares</i>	<i>Percentage</i>
Agricultural	148.86	61.87
Institutional	26.39	10.97
Forest	25.96	10.79
River/creek	17.30	7.19
Road	17.73	7.37
Residential	4.33	1.80
<i>Total</i>	<i>240.57</i>	<i>100%</i>

Source: *Lubas Socio-Economic Profile, 1998*

III. DEMOGRAPHY

Population, Growth, and Population Estimates

The table below shows that the population of Lubas in year 1975 was 629. This increased to 842 in 1980, 1,509 in 1990, 2,582 in 1995 and 3,105 in 2000. It has further grown to 4,602 in 2007 and 5,591 in 2010.

Population: Census years 1975-2010

<i>Census</i>	1975	1980	1990	1995	2000	2007	2010
<i>Population</i>	629	842	1,509	2,582	3,105	4,602	5,591

Source: NSO

The population grew at 10.3% between 1990 and 1995 and dropped down to 4.03% between 1995 and 2000. Between 2000 and 2007, the growth rate was 5.782%, and between 2007 and 2010, the growth rate was 6.70%.

<i>Intercensal Growth Rate</i>				<i>AVERAGE</i>
1990-1995	1995-2000	2000-2007	2007-2010	<i>GROWTH RATE</i>
10.3	4.03	5.782	6.70	6.70

Source: *LT Physical and Socio-economic Profile 2012*

Using the computed average growth rate of 6.70%, the projected population for 2013 is 6,793 persons with 1,698 estimated numbers of households. For 2014, the projected population is 7,248 persons and the estimated number of households is 1,812. The projected population for 2015 is 7,734 persons with 1,933 estimated households. For 2016, the projected population is 8,252 persons with estimated households of 2,063.

Estimated Population (2012-2020)



Republic of the Philippines
Province of Benguet
Municipality of La Trinidad
BARANGAY LUBAS

Year	Projected Population	Estimated No. of HHs
2011	5,966	1,491
2012	6,366	1,591
2013	6,793	1,698
2014	7,248	1,812
2015	7,734	1,933
2016	8,252	2,063
2017	8,805	2,201
2018	9,395	2,349
2019	10,025	2,506
2020	10,697	2,674

Source: MPDO Estimates based on NSO Census 1995, 2000, 2007 & 2010

Population Doubling Time : 10.4 years

Based on the Community-Based Monitoring System (CBMS) of the Local Government Unit of La Trinidad in 2010, the individual population of Barangay Lubas is 4,564. The total population is broken down to 49.75% or 2,271 males and 50.24% or 2,293 females.

Sex	#	%
Male	2,271	49.76%
Female	2,293	50.24%
<i>Total</i>	<i>4,564</i>	<i>100.00%</i>

Total Number of Households: 1,129

Average Household Size : 4

Source: CBMS 2010

Population by Sitio

Table below shows that Rocky Side I (22.55%) and II (21.80%) are the most populated Sitios of the Barangay where almost half of the populace reside. This is followed by Sitio Inselbeg with 18.95%, Proper Lubas with 17.18% and Sitio Pipingew with 15.%. On the other hand, Sitio Guitley is the least populated sitio with 4.35% or 49 households.

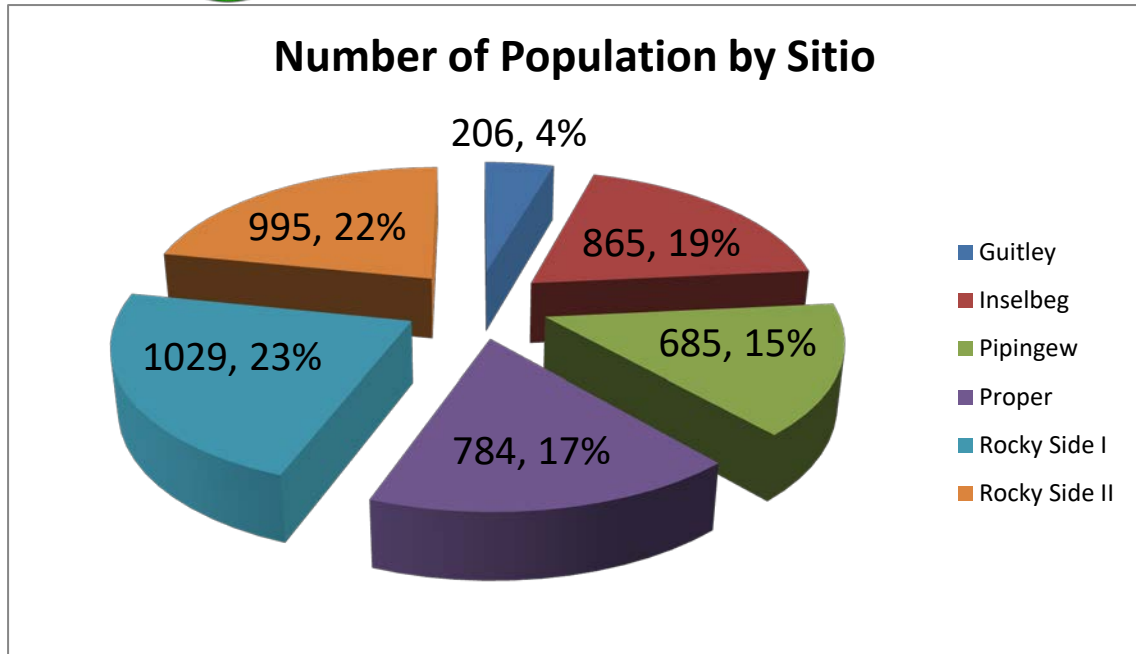
The top three Sitios are where big residential houses, boarding houses and commercial establishments are located. The other least three are mainly agricultural land and with fewer houses.

Sitio/Purok	# of Hhs	%	Population
Inselbeg	207	18.34%	865
Rocky Side 1	250	22.14%	1,029
Rocky Side 2	266	23.56%	995
Proper Lubas	193	17.09%	784
Pipingew	164	14.53%	685
Guitley	49	4.34%	206
<i>Total</i>	<i>1,129</i>	<i>100.00%</i>	<i>4,564</i>

Source: Community-Based Monitoring System 2010



Republic of the Philippines
Province of Benguet
Municipality of La Trinidad
BARANGAY LUBAS



Source: Community-Based Monitoring System 2010

Density & Classification

Barangay Lubas is classified as a rural community until 2010 based on the new levels of urbanization where it is no urban. It has a population density of 28 persons per hectare.

Population by Sex & Age Groups

In terms of population by age-group, table shows that children have the highest number in the population with 0-4 years old having the highest figure of 594. Age group starting 15 to 19 up to 25 to 29 which covers the youth population has almost the same figure with population of the 0 to 4 up to 10 to 14 years old. Data shows that the population is still young.

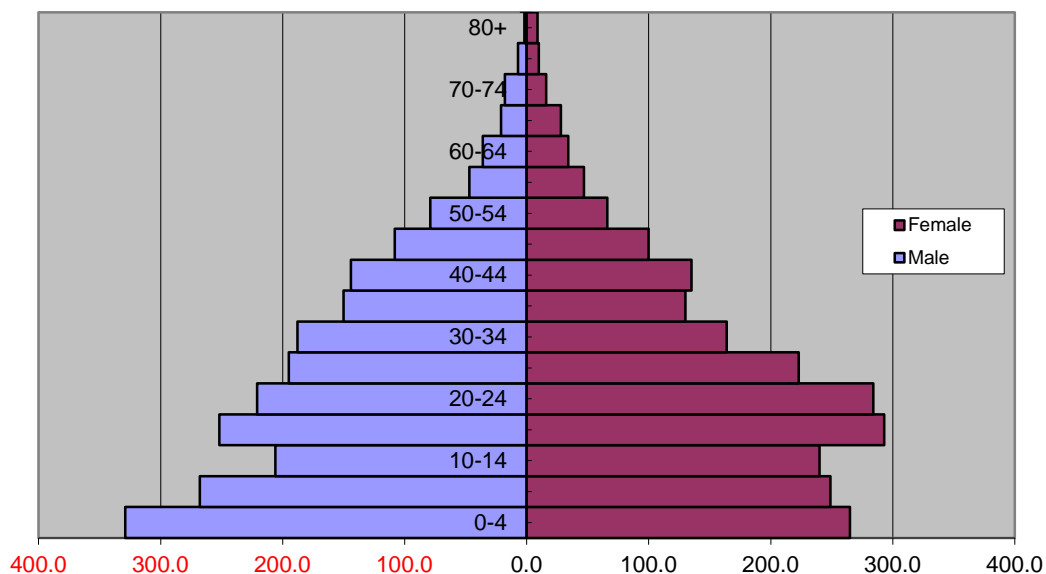
On the other hand, the least number is seen within the senior citizen age groups with less than 100 for individuals age 60-64 up to 80 years and above.

In terms of sex distribution of the population of Lubas, male to female ratio is almost the same. There is just a slight difference of .48 percent from 2,293 (50.24%) females to 2,271 (49.76%) males. Sex-disaggregated data for each specific age group is presented on the table.



Republic of the Philippines
 Province of Benguet
 Municipality of La Trinidad
BARANGAY LUBAS

**AGE-SEX PYRAMID
 2010**



	0-4	5-9	10-14	15-19	20-24	25-29	30-34	35-39	40-44	45-49	50-54	55-59	60-64	65-69	70-74	75-79	80+
Female	265.	249.	240.	293.	284.	223.	164.	130.	135.	100.	66.0	47.0	34.0	28.0	16.0	10.0	9.0
Male	-329.	-268.	-206.	-252.	-221.	-195.	-188.	-150.	-144.	-108.	-79.0	-47.0	-36.0	-21.0	-18.0	-7.0	-2.0

Age Group	Total	Male	Female	% Male	%Female	Sex Ratio
0-4	594	329	265	7.21%	5.81%	124.15%
5-9	517	268	249	5.87%	5.46%	107.63%
10-14	446	206	240	4.51%	5.26%	85.83%
15-19	545	252	293	5.52%	6.42%	86.01%
20-24	505	221	284	4.84%	6.22%	77.82%
25-29	418	195	223	4.27%	4.89%	87.44%
30-34	352	188	164	4.12%	3.59%	114.63%
35-39	280	150	130	3.29%	2.85%	115.38%
40-44	279	144	135	3.16%	2.96%	106.67%
45-49	208	108	100	2.37%	2.19%	108.00%
50-54	145	79	66	1.73%	1.45%	119.70%
55-59	94	47	47	1.03%	1.03%	100.00%
60-64	70	36	34	0.79%	0.74%	105.88%
65-69	49	21	28	0.46%	0.61%	75.00%
70-74	34	18	16	0.39%	0.35%	112.50%
75-79	17	7	10	0.15%	0.22%	70.00%
80+	11	2	9	0.04%	0.20%	22.22%
Total	4,564	2,271	2,293	49.76%	50.24%	99.04%

Source: CBMS 2010



Republic of the Philippines
 Province of Benguet
 Municipality of La Trinidad
BARANGAY LUBAS

<i>Age Group</i>	<i>Male</i>	<i>Female</i>	<i>Both Sexes</i>	<i>Proportion</i>
all ages	2271	2293	4,564	100%
0	76	59	135	2.96%
1	58	56	114	2.50%
2	66	56	122	2.67%
3	60	48	108	2.37%
4	69	46	115	2.52%
5	47	49	96	2.10%
6	57	50	107	2.34%
7	48	48	96	2.10%
8	54	55	109	2.39%
9	62	47	109	2.39%
10	35	43	78	1.71%
11	40	50	90	1.97%
12	39	50	89	1.95%
13	43	50	93	2.04%
14	49	47	96	2.10%
15	39	55	94	2.06%
16	49	57	106	2.32%
17	56	60	116	2.54%
18	47	55	102	2.23%
19	61	66	127	2.78%
20	57	67	124	2.72%
21-25	214	260	474	10.39%
26-30	194	212	406	8.90%
31-35	172	151	323	7.08%
36-40	146	139	285	6.24%
41-45	145	129	274	6.00%
46-50	95	94	189	4.14%
51-55	77	61	138	3.02%
56-60	39	41	80	1.75%
61-65	34	35	69	1.51%
66 & over	43	57	100	2.19%

Source: CBMS 2010

Age Dependency

Age dependency ratio is defined by the National Statistics Office (NSO) as the sum of the number of children (0 to 14 years old) and the number of elderly (65 years old and above) of over the number of people working age (15-64 years old).

<i>Dependency Ratios</i>	<i>#</i>	<i>% to Total</i>	<i>Ratios</i>
Young-Age Dependency Ratio (0-14)	1,557	34.11%	53.76
Old-Age Dependency Ratio (65+)	111	2.43%	3.83
Age Dependency Ratio (Total Dependent)	1,668	36.54%	57.59
Working Age Group (15-64)	2,896	63.45%	42.40

Source: CBMS 2010



Republic of the Philippines
 Province of Benguet
Municipality of La Trinidad
BARANGAY LUBAS

From the CBMS data of 2010, the number of children (0 to 14 years old) totals to 1,557 while the number of elderly (65 years old and above) is 111 in the barangay. Furthermore, the number of working age (15 to 64 years old) is 2, 896. As such, the age dependency ratio in the Barangay is 57.59 percent. This means that for every 100 working people in the barangay, there were 58 dependents consisted of children and elderly.

Median Age

The median age of the total population of Lubas was 22 years old. This means that half of the total population belongs to the young population ages 22 years old and below.

Migrants

There were 1,445 migrants in the barangay, representing 31.66% of the total population of Lubas. This is broken down to 679 males or 46.99% and 766 females or 53.01%.

<i>Migrants</i>	<i>#</i>	<i>%</i>
Male	679	46.99%
Female	766	53.01%
<i>Total</i>	<i>1,445</i>	<i>100.00%</i>

Source: CBMS 2010

Length of Residency

Table below reads the number of population by length of residency in the barangay. Out of the overall population, most of the residents with 39.53% or 1,804 said that they are residents of the barangay since they were born. The second highest percentage is 31.66% or 1, 445 who claimed that they resided in the barangay for less than 5 years. Additionally, 542 resided for 6 to 10 years, 251 resided for 11 to 15 years, 217 resided to 16 to 20 years, 129 resided for 21 to 25 years, 100 resided for 26 to 30 years and 76 resided for 31 years and above.

<i>Length of Residency</i>	<i>#</i>	<i>%</i>
0 - 5 Years	1,445	31.66%
6 - 10 Years	542	11.88%
11 - 15 Years	251	5.50%
16 - 20 Years	217	4.75%
21 - 25 Years	129	2.83%
26 - 30 Years	100	2.19%
31 - 35 Years	23	0.50%
36 - 40 Years	26	0.57%
41 - 45 Years	11	0.24%
46 - 50 Years	9	0.20%
51 - 55 Years	3	0.07%
56 - 60 Years	0	0.00%
61 - 65 Years	2	0.04%
66 Years and Above	2	0.04%
Since Birth	1,804	39.53%
<i>Total</i>	<i>4,564</i>	<i>100.00%</i>

Source: Community-Based Monitoring System 2010



Republic of the Philippines
 Province of Benguet
 Municipality of La Trinidad
BARANGAY LUBAS

IV. SOCIAL CHARACTERISTICS

A. CULTURAL ATTRIBUTES

Religious Affiliation

The table below shows that most of the individuals in Lubas with a total of 2,070 or 45.35% belong to the Catholic group followed by the Protestant with a total of 1,434 or 31.42%.

This reflects that majority of the community are involved in spiritual development despite their differences in religious affiliations. Religious involvement is unquestionably a factor in the success of the community development since it helps individuals to strengthen their beliefs and aspirations to serve God.

<i>Religion</i>	<i>#</i>	<i>%</i>
4 Square	2	0.04%
Aglipay	2	0.04%
Anglican	80	1.75%
Assembly of God	86	1.88%
Baptist	8	0.18%
Born Again Christian	91	1.99%
Catholic	2,070	45.36%
Crusaders	5	0.11%
Espiritista	14	0.31%
Free Believers	2	0.04%
Iglesia ni Cristo	114	2.50%
Islam	2	0.04%
IW	4	0.09%
Jehovah's Witnesses	39	0.85%
Jesus Miracle	9	0.20%
KKMI	12	0.26%
Lutheran	7	0.15%
Mormon	1	0.02%
Paltiing	89	1.95%
Pentecostal	5	0.11%
Protestant	1,434	31.42%
Seventh Day Adventist	1	0.02%
United Church of Christ of the Philippines	31	0.68%
Not Stated	434	9.51%
None	22	0.48%
<i>Total</i>	<i>4,564</i>	<i>100.00%</i>

Source: Community-Based Monitoring System 2010



Republic of the Philippines
Province of Benguet
Municipality of La Trinidad
BARANGAY LUBAS

Membership to Community Organization (10 years old and above)

Of the total 3,453 individuals, the above Table shows that only 306 or 8.86% are members of a community organization and almost all of the total individuals are non-members with a percentage of 91.14% or 3,147.

<i>Membership to a Community Organization</i>	<i>Male</i>	<i>Female</i>	<i>Total</i>	<i>%</i>
Member	117	189	306	8.86%
Non-Member	1,557	1,590	3,147	91.14%
<i>Total</i>	<i>1,674</i>	<i>1,779</i>	<i>3,453</i>	<i>100.00%</i>

Source: Community-Based Monitoring System 2010

Out of 306, most are members of women's organization with 80 in number or 26.14%. Members of cultural group were accounted for 57 individuals with 22 males and 35 females, representing 18.63%. There were 49 who are members of senior citizen association composing of 22 males and 27 females, representing 16.01%.

<i>Type of Community Organizations</i>	<i>Male</i>	<i>Female</i>	<i>Total</i>	<i>%</i>
Religious Group	9	11	20	6.54%
Youth Group	0	8	8	2.61%
Cultural Group	22	35	57	18.63%
Political Group	0	1	1	0.33%
Women's Organization	0	80	80	26.14%
Agriculture-Based Organization	21	3	24	7.84%
Labor Organization	3	0	3	0.98%
Civic Association	3	5	8	2.61%
Cooperative	28	17	45	14.71%
Senior Citizen Association	22	27	49	16.01%
Others	9	2	11	3.60%
<i>Total</i>	<i>117</i>	<i>189</i>	<i>306</i>	<i>100.00%</i>

Source: Community-Based Monitoring System 2010

Ethnicity

The table below summarizes the ethnicity that characterizes the barangay. It is noted that the majority of the barangay households are Kankanaeys with 68.76%.

<i>Indigenous Group</i>	<i>#</i>	<i>%</i>
Bago	119	2.61%
Ibanag	18	0.39%
Kankanaey	3,138	68.76%
Mangyan	22	0.48%
Ibaloi	444	9.73%
Aeta	8	0.18%
Tagbanuas	11	0.24%
Cuyonen	1	0.02%
Teduray	2	0.04%
Ati	1	0.02%



Republic of the Philippines
 Province of Benguet
Municipality of La Trinidad
BARANGAY LUBAS

Dumagat	1	0.02%
Bicolano	11	0.24%
Bisaya	13	0.28%
Ilocano	86	1.88%
Pangasinense	24	0.53%
Tagalog	19	0.42%
Applai	8	0.18%
Barlig	4	0.09%
Cavite	1	0.02%
Cebuano	3	0.07%
Ifugao	8	0.18%
Ilongot	16	0.35%
Isneg	3	0.07%
Itawes	1	0.02%
Kalinga	16	0.35%
Kapampangan	1	0.02%
Kiangnan	1	0.02%
Tabacaño	1	0.02%
Tausug	1	0.02%
Tingguian	9	0.20%
Waray	3	0.07%
Bagobo	1	0.02%
Zamba	3	0.07%
Not Stated	259	5.67%
Does not Belong to Indigenous Group	307	6.73%
<i>Total</i>	<i>4,564</i>	<i>100.00%</i>

Source: Community-Based Monitoring System 2010

B. EDUCATION

Literacy (10 years old and above)

Based on the data taken from the Community-Based Monitoring System of 2010, the table below shows the literacy rate of the barangay ages 10 years and above. The table shows that the literacy rate of the barangay is high basing on its percentage rate of 98.15% and majority are females.

<i>Literacy (10 years old and above)</i>	<i>Male</i>	<i>Female</i>	<i>Total</i>	<i>%</i>
Literate	1,652	1,737	3,389	98.15%
Illiterate	22	42	64	1.85%

Source: Community-Based Monitoring System 2010

Based on the CBMS survey, of the 4,193 population, only 36.30% or 1,522 are attending school and almost three fourths of the populations with a percentage of 63.70% or 2,671 are not attending school. In addition majority of those attending and not attending were female.



Republic of the Philippines
 Province of Benguet
 Municipality of La Trinidad
BARANGAY LUBAS

<i>Attending School by Sex</i>	<i>Male</i>	<i>Female</i>	<i>Total</i>	<i>%</i>
Attending School	736	786	1,522	36.30%
Not attending School	1,335	1,336	2,671	63.70%
<i>Total</i>	<i>2,071</i>	<i>2,122</i>	<i>4,193</i>	<i>100.00%</i>

Source: Community-Based Monitoring System 2010

Educational Attainment of Population aged 3 years and above by sex

Table 9 shows that 329 (7.85%) of the residents aged 3 years and above had not undergone any schooling, 126 (3.01%) had day care, 344 (8.20%) graduated elementary, 731 (17.43%) graduated high school, 602 (14.36%) graduated college and 13 (.31%) had master's/doctorate degree

<i>Educational Attainment by Age (3y/o +)</i>	<i>Male</i>	<i>Female</i>	<i>Total</i>	<i>%</i>
No Grade	177	152	329	7.85%
Day Care	70	56	126	3.01%
Nursery/Kindergarten/Preparatory	29	30	59	1.41%
Grade 1	78	56	134	3.20%
Grade 2	68	78	146	3.48%
Grade 3	71	69	140	3.34%
Grade 4	71	68	139	3.32%
Grade 5	70	48	118	2.81%
Grade 6/7	23	10	33	0.79%
Elementary Graduate	185	159	344	8.20%
1st Year High School	68	73	141	3.36%
2nd Year High School	103	95	198	4.72%
3rd Year High School	87	77	164	3.91%
4th/5th Year High School	7	14	21	0.50%
High School graduate	393	338	731	17.43%
1st year Post Secondary	13	11	24	0.57%
2nd year Post Secondary	8	16	24	0.57%
3rd year Post Secondary	6	5	11	0.26%
Post Secondary graduate	66	61	127	3.03%
1st year College	87	111	198	4.72%
2nd year College	93	112	205	4.89%
3rd year College	61	61	122	2.91%
4th year College or higher	12	27	39	0.93%
College graduate	220	382	602	14.36%
With units Masters/Doctors	1	4	5	0.12%
Doctors/Master's degree	4	9	13	0.31%
<i>Total</i>	<i>2,071</i>	<i>2,122</i>	<i>4,193</i>	<i>100.00%</i>

Source: Community-Based Monitoring System 2010



Republic of the Philippines
 Province of Benguet
Municipality of La Trinidad
BARANGAY LUBAS

Educational Attainment of those in School

There are 1, 522 individuals in school-based on the CBMS 2010. Data shows that 136 of these are day care pupils with 74 males and 62 females. A number of 66 are kindergarten composed of 34 males and 32 females. A total of 600 persons are in elementary with 297 males and 303 females. Some 359 are high school, of whom 161 were males and 198 were females. And 340 are in college consisting of 152 males and 188 females. Two (2) persons are post-graduate, a male and a female.

<i>Grade/Year Level</i>	<i>Male</i>	<i>Female</i>	<i>Total</i>	<i>%</i>
Day Care	74	62	136	8.94%
Nursery/Kindergarten/Preparatory	34	32	66	4.34%
Grade 1	63	51	114	7.49%
Grade 2	62	46	108	7.10%
Grade 3	48	63	111	7.29%
Grade 4	39	54	93	6.11%
Grade 5	47	49	96	6.31%
Grade 6/7	38	40	78	5.12%
1st Year HS	49	59	108	7.10%
2nd Year HS	39	46	85	5.58%
3rd Year HS	35	45	80	5.26%
4th/5th Year HS	38	48	86	5.65%
1st year PS	11	1	12	0.79%
2nd year PS	2	1	3	0.20%
3rd year PS	4	0	4	0.26%
1st year College	43	53	96	6.31%
2nd year College	45	61	106	6.96%
3rd year College	42	47	89	5.85%
4th year College or higher	22	27	49	3.22%
Post Graduate w/ Units	1	1	2	0.13%

Source: Community-Based Monitoring System 2010

Attending and Not Attending School by Age Group (3 to 21 years old)

A total of 1,949 individuals belongs to the school going age of 3 to 21 years old. This is broken into 960 males and 989 females. Of 1,949, 75.58% or 1,473 persons were attending school and 476 persons or 24.42% were not in school.

For those in the pre-school ages, only half of the total is in school. For those in the elementary ages 6 to 12 years old, at least more than 98% were in school. For ages appropriate for secondary level, at least 87% were in school except for those in age group of 16 where only 81% were in school. For those in ages appropriate for college level, there were less compared to those in lower level.



Republic of the Philippines
Province of Benguet
Municipality of La Trinidad
BARANGAY LUBAS

Age Group	Sex			In School		Out of School	
	Male	Female	Total	#	% To Age Group	#	% To Age Group
3	60	48	108	19	17.59%	89	82.41%
4	69	46	115	64	55.65%	51	44.35%
5	47	49	96	84	87.50%	12	12.50%
6	57	50	107	104	97.20%	3	2.80%
7	48	48	96	95	98.96%	1	1.04%
8	54	55	109	105	96.33%	4	3.67%
9	62	47	109	106	97.25%	3	2.75%
10	35	43	78	76	97.44%	2	2.56%
11	40	50	90	87	96.67%	3	3.33%
12	39	50	89	87	97.75%	2	2.25%
13	43	50	93	82	88.17%	11	11.83%
14	49	47	96	84	87.50%	12	12.50%
15	39	55	94	89	94.68%	5	5.32%
16	49	57	106	86	81.13%	20	18.87%
17	56	60	116	91	78.45%	25	21.55%
18	47	55	102	68	66.67%	34	33.33%
19	61	66	127	73	57.48%	54	42.52%
20	57	67	124	57	45.97%	67	54.03%
21	48	46	94	16	17.02%	78	82.98%
3 to 21	960	989	1,949	1,473	75.58%	476	24.42%
22-25	166	214	380	39	10.26%	341	89.74%
26-30	194	212	406	5	2.36%	207	97.64%
31-35	172	151	323	2	1.32%	149	98.68%
36 & over	579	556	1,135	3	0.26%	1,132	99.74%
Total	2,071	2,122	4,193	1,522		2,305	

Source: CBMS 2010

Educational Facilities and Enrollment

There are two (2) Day Care Centers in the Barangay namely: Guitley Day Care Center and Lubas Proper Day Care Center. These Day Care Centers are supervised by the Municipal Social Welfare and Development Office - La Trinidad, Benguet.

The Barangay has one public elementary school, the Lubas Elementary School and one public secondary school in the name of La Trinidad National High School (LTNHS). Both schools have their own library that caters to needs of the students. They have books that are just enough for the students especially for the higher years while those who are in Grade 7 and Grade 8 photocopy their own modules.

Further, the Barangay Council conducts activities that promote educational values such as Educational Film Viewing in the Barangay Hall during lunch time and organizing remedial classes to pupils who find difficulties in their studies. A reading corner with reading materials is also set inside the barangay hall for easy access of children.



Republic of the Philippines
Province of Benguet
Municipality of La Trinidad
BARANGAY LUBAS

La Trinidad National High School initiated the Advocating Drop-out Reduction by Everyone (ADORE) project which aims to save Students At-risk of Dropping Out (SARDO) until they finish secondary education. The project recognized major factors affecting the SARDOs and to address these problems, they have identified beneficial interventions through the establishment of the Musical Band, Revival of Sports Teams, Adopt-a-Child Advocacy, Modular Classes, Special Awards and Regular Parents, Teacher and Community Conferences.

The Council also coordinates with Bureau of Alternative Learning System for the possible deployment of an ALS mobile teacher every year to teach in the barangay.

There is also an existing Children Development Program (CDP) funded by Korea Food for the Hungry International (KFHI). The program mainly focuses on the values education of Lubas children. Education sessions are conducted every Saturday.

Type of School

The table below shows the enrollees of pupil/students according to the type of school they attend to.

<i>School Type</i>	<i>Male</i>	<i>Female</i>	<i>Total</i>	<i>%</i>
Public School	554	605	1,159	76.15%
Private School	182	181	363	23.85%
<i>Total</i>	<i>736</i>	<i>786</i>	<i>1,522</i>	<i>100.00%</i>

Source: Community-Based Management System 2010

Sports and Recreation Facilities

The playground of Lubas Elementary school serves also as the basketball court in the community and sometimes this is used in special events of the community. The Day Care Centers have their own playground to cater to the recreational or sports needs of the children.

The Barangay Council also conducts film viewing twice a week at the barangay hall purposely for children and parents. Also, journalism training for kids is given by the Council for at least once a year.

Currently, there is an on-going construction of two-storey Multi-Purpose Hall to be use by the council and the different recognized organizations of Lubas and other events that needs housing.



Republic of the Philippines
Province of Benguet
Municipality of La Trinidad
BARANGAY LUBAS

C. HEALTH

Health Facilities

There is one Barangay Health Center located inside the compound of Lubas Elementary School. The health center has functional equipments like baby weighing scale, detector weighing scale and Salter used for operation timbang, height measuring tool, functional BP apparatus for adults, functioning refrigerator, vaccines, thermometer, vaccine carrier with ice packs and delivery kit with contents.

Most of the residents consider modern health measures such as having a regular check-up, taking vitamins and supplements and vaccinations to strengthen their immune system. In addition, Barangay Lubas is conducting health consultation every Monday to Wednesday at the health center. In the case of other sitios, the midwife together with the Barangay Health Workers and BNS conduct health consultations every Thursdays of the month. Further, traditional health measure like hilot is still practiced in the community. Also, BHWs conduct "Hataw" every Monday in front of the center where parents and youth follow simple dance steps and move their bodies for at most 30 minutes.

The following are the programs conducted by the barangay health center:

- a. Pre-natal check-up
- b. Post-partum
- c. Free immunization that includes BCG, Hepa B, OPV, DPT, Rotavirus, Penta and Anti-measles vaccinations
- d. Introducing the use of Family Planning methods
- e. IEC Campaign on dengue, breastfeeding, anti-rabies and anti-smoking

Treatment for Sickness

Based on the CBMS 2010 Survey, of the total household of 1,129, only 38.88% or 439 were able to avail treatment. Five hundred seventy four (574) or 50.84% did not avail of any treatment and 10.27% or 116 did not get sick.

<i>Availment of Treatment/Cure For Sickness</i>	<i>#</i>	<i>%</i>
Yes	439	38.88%
No	574	50.84%
Did Not Get Sick	116	10.27%
<i>Total</i>	<i>1,129</i>	<i>100.00%</i>

Source: *Community-Based Monitoring System 2010*



Republic of the Philippines
Province of Benguet
Municipality of La Trinidad
BARANGAY LUBAS

Access to Health Facilities

From those who availed treatment, 158 patients received medical treatment from the provincial public hospital, representing 35.99%. There were 84 patients who availed treatment from private hospital or clinic, representing 19.13%. Sixty seven (67) patients received medical treatment from barangay health station which is accounted to 15.26%.

<i>Place Where Received Treatment</i>	<i>#</i>	<i>%</i>
Public Hospital (provincial)	158	35.99%
Public Hospital (municipal/city)	32	7.29%
Public Hospital (district)	1	0.23%
Public Hospital (national)	62	14.12%
Private Hospital/Clinic	84	19.13%
Rural Health Units	12	2.73%
Barangay Health Station/Center	67	15.26%
Non-Medical/Non-Trained Hilot/Personnel	19	4.33%
Others	4	0.91%
<i>Total</i>	<i>439</i>	<i>100.00%</i>

Source: Community-Based Monitoring System 2010

Mortality

The table below records 15 deaths in the Barangay in 2010. The leading causes of death as presented on the table below are heart disease (3), vascular system disease (2), cancer (6) and others (4). Nine of these were males and 6 were females.

<i>Cause of Death</i>	<i>Male</i>	<i>Female</i>	<i>Total</i>	<i>%</i>
Diseases of the heart	2	1	3	20.00%
Diseases of the vascular system	2	0	2	13.33%
Cancer	3	3	6	40.00%
Others	2	2	4	26.67%
<i>Total</i>	<i>9</i>	<i>6</i>	<i>15</i>	<i>100.00%</i>

Source: Community-Based Monitoring System, 2010

Nutritional Status of Children (0 to 5 years old)

The Table shows that there is high percentage of normal children in the barangay with 98.60%. There were 4 children who are underweight, 2 children who are overweight and 2 children who are severely underweight.

<i>Nutritional Status of Children 0-5 Years Old</i>	<i>Male</i>	<i>Female</i>	<i>Total</i>	<i>%</i>
Overweight	2	0	2	0.35%
Normal	301	261	562	98.60%
Underweight	2	2	4	0.70%
Severely Underweight	0	2	2	0.35%
<i>Total</i>	<i>305</i>	<i>265</i>	<i>570</i>	<i>100.00%</i>

Source: MHO 2012



Republic of the Philippines
Province of Benguet
Municipality of La Trinidad
BARANGAY LUBAS

Family Planning Methods usage

The table shows that 128 or 41.29% of the total households use Pills as means of family planning method. There were 67 couples who adopted tubal ligation, representing 21.61%. And injectable was adopted by 34 couples, representing 10.97%.

<i>Couples by Family Planning Method</i>	<i>#</i>	<i>%</i>
Barrier Method	18	5.81%
Basal Body Temperature	4	1.29%
Billings Ovulation Method	4	1.29%
Injectable	34	10.97%
IUD	11	3.55%
Pills	128	41.29%
Standard Days Method	12	3.87%
Symtothermal Method	8	2.58%
Tubal Ligation	67	21.61%
Others	24	7.74%
<i>Total</i>	<i>310</i>	<i>100.00%</i>

Source: Community-Based Monitoring System 2010

Contraceptive Prevalence Rate : 44.41% of Currently Married Women (CWM)
15-49 Years Old Use Contraceptive Methods

: 40.97 % of CWM 15-49 Years Old Use
Modern Contraceptive Method

: 3.44% of CWM 15-49 Years Old Use
Traditional Contraceptive Method

Environmental Sanitation

Solid Waste Management

Waste Generation. The total waste generated daily in Lubas was 3 metric tons. This comprised of 2.44 metric tons in residential area, 0.29 metric ton from institutions (schools and offices), 0.16 metric ton from business establishments and 0.10 from the farms.

<i>Estimated Total Waste Generated</i> : 3 metric tons(mt) daily	
Residential : 2.44 mt	Commercial : 0.16 mt
Institutional : 0.29 mt	Agriculture : 0.10 mt
Markets : 0.00 mt	

Source: MPDO Estimate based on 0.534 kg/person/day



Republic of the Philippines
 Province of Benguet
Municipality of La Trinidad
BARANGAY LUBAS

System of Garbage Disposal. The table below shows that 994 or 30.55% household are dependent on garbage collection followed by waste segregation with a rate of 21.42% representing 697 households. Five hundred seventy five (575) households do recycling, representing 50.93%.

<i>System of Garbage Disposal</i>	<i>#</i>	<i>%</i>
Garbage Collection	994	88.04%
Burning	303	26.84%
Composting	311	27.55%
Recycling	575	50.93%
Waste Segregation	697	61.74%
Compost Pit with Cover	36	3.19%
Compost Pit without Cover	336	29.76%
Others	2	0.18%

Source: Community-Based Monitoring System 2010

Garbage Collection. The Barangay is the most that collects the garbage in the community as represented in the above data. The municipal garbage collector collects the garbage of 26.75% of the total households in the community.

<i>Who Collects the Garbage</i>	<i>#</i>	<i>%</i>
Municipal/city garbage collector	302	26.75%
Barangay garbage collector	691	61.20%
Private garbage collector	1	0.09%
None	135	11.96%
<i>Total</i>	<i>1,129</i>	<i>100.00%</i>

Source: Community-Based Monitoring System 2010

Collection Frequency. Generally, Barangay Lubas has a clean and green environment. Garbage is being collected every Thursdays in partnership with Barangay Ambiong, having their own garbage truck to transport the wastes collected. Once or twice a year, there is a clean-up drive participated by the residents, Sangguniang Kabataan and Barangay Officials. Further, the barangay have street sweepers who do their work every Wednesdays; and there is an assigned Barangay Tanod per Sitio for the maintenance of cleanliness and sanitation in their respective areas. In support to the government effort in promoting the solid waste management program, the Barangay also campaigns for the “Dugad Mo, Shalosim” Program, a local phrase which means “Clean your place.”

<i>Frequency of Garbage Collection</i>	<i>#</i>	<i>%</i>
Daily	74	6.55%
Thrice a Week	218	19.31%
Twice a Week	100	8.86%
Once a Week	581	51.46%
Others	21	1.86%
None	135	11.96%
<i>Total</i>	<i>1,129</i>	<i>100.00%</i>

Source: Community-Based Monitoring System 2010



Republic of the Philippines
Province of Benguet
Municipality of La Trinidad
BARANGAY LUBAS

Sanitation Facilities

There were 712 households who have their own flush toilets with septic tanks, representing 63.06% of the total households. Three hundred fifty six (356) households share septic tank to other households, representing 31.53%. A total of 58 households still use pits, where 38 households or 3.37% use closed pits and 20 households or 1.77% use open pits.

<i>Kind of Toilet Facility</i>	<i>#</i>	<i>%</i>
Water-sealed Flush to Sewerage/Septic Tank- own	712	63.06%
Water-sealed Flush to Sewerage/Septic Tank- shared	356	31.53%
Close Pit	38	3.37%
Open Pit	20	1.77%
No Toilet	3	0.27%
<i>Total</i>	<i>1,129</i>	<i>100.00%</i>

Source: Community-Based Monitoring System 2010

D. HOUSING

Residential Construction

As per record of the Municipal Engineering Office, there were 26 new buildings constructed in the barangay as of 2012. This represents 6.88% of the total number of new buildings constructed in the municipality of La Trinidad.

House Ownership

The Table shows that more than half or 58.72% of the household in the barangay own their residential houses. This indicates that owning a land contributes to the development and economic growth of every family since it will minimize their expenses.

<i>Households by Tenure Status</i>	<i>#</i>	<i>%</i>
Owner, owner-like possession of house and lot	663	58.72%
Rent house/room including lot	304	26.93%
Own house/rent lot	2	0.18%
Own house, rent-free lot with consent of owner	5	0.44%
Own house, rent-free lot without consent of owner	2	0.18%
Rent-free house and lot with consent of owner	148	13.11%
Rent-free house and lot without consent of owner	3	0.27%
Other tenure status	2	0.18%
<i>Total</i>	<i>1,129</i>	<i>100.00%</i>

Source: Community-Based Monitoring System 2010

Average Imputed Rent per Month for the House and/ Lot

Based on the Community-Based Monitoring System 2010, the barangay has an average imputed rent per month for the house and/ lot in the barangay amounting to three thousand eleven (Php3,011.00) pesos only. Imputed rent refers to the amount the owner would charge to rent the housing unit if the house and lot is owned or being used for free.



Republic of the Philippines
Province of Benguet
Municipality of La Trinidad
BARANGAY LUBAS

Construction Materials of Housing Units

Table 19 reads that most or 80.25% of the housing units occupied by the households in Lubas were made out of strong materials. There are 17.63% who have mixed but predominantly strong materials and minimal figures on houses made out of light and salvaged materials. This is probably due to the cold weather.

<i>Households by Type of Materials Used for Walls</i>	<i>#</i>	<i>%</i>
Strong Materials	906	80.25%
Light Materials	1	0.09%
Salvaged/Makeshift Materials	6	0.53%
Mixed but Predominantly Strong	199	17.63%
Mixed but Predominantly Light	14	1.24%
Mixed but Predominantly Salvage	3	0.27%
<i>Total</i>	<i>1,129</i>	<i>100.00%</i>

Source: Community-Based Monitoring System 2010

The same data can be observed for materials used for roofing. The Tables show that most of the residential houses are made of strong materials and permanently constructed which entails longer building life and fewer expenses for renovations and safer to live in.

<i>Households by Type of Materials Used for Roof</i>	<i>#</i>	<i>%</i>
Strong Materials	890	78.83%
Light Materials	3	0.27%
Salvaged/Makeshift Materials	2	0.18%
Mixed but Predominantly Strong	217	19.22%
Mixed but Predominantly Light	14	1.24%
Mixed but Predominantly Salvage	3	0.27%
<i>Total</i>	<i>1,129</i>	<i>100.00%</i>

Source: Community-Based Monitoring System 2010

Household Conveniences

The LPG Gas Stove/Range is the most commonly owned appliance which is used by 1,085 households, representing 96.10%. This is followed by mobile or cellular phone with 1,019 households, representing 90.26%. Some 997 households owned television, representing 88.31%. The radio or radio cassette was owned by 856 households, representing 75.82%. And 803 households owned CD/VCD/DVD player, representing 71.12%.

<i>Households With Appliances/Durables</i>	<i>#</i>	<i>%</i>
Radio/Radio Cassette	856	75.82%
Television	997	88.31%
CD/VCD/DVD	803	71.12%
Stereo/Component	210	18.60%
Karaoke	66	5.85%
Refrigerator/Freezer	555	49.16%
Electric Fan	99	8.77%
Electric Iron	527	46.68%
LPG Gas Stove/Range	1,085	96.10%



Republic of the Philippines
Province of Benguet
Municipality of La Trinidad
BARANGAY LUBAS

Washing Machine	547	48.45%
Microwave Oven	126	11.16%
Personal Computer	289	25.60%
Mobile Phone/Cellular Phone	1,019	90.26%
Landline Telephone	35	3.10%
Air-conditioner	10	0.89%
Sewing Machine	78	6.91%
Car, Jeep, Motorcycle and Other Motorized Vehicles	164	14.53%

Source: *Community-Based Monitoring System 2010*

E. SOCIAL WELFARE

Social welfare services are being served by the Municipal Social Welfare and Development Office (MSWDO) of the municipality. The Barangay Council assists through the Committee on Social Services in extending these services to its constituents.

Day Care Center Facilities

There are two Day Care Centers serving the day care services in the barangay namely, Guitley Day Care Center and Lubas Proper Day Care Center. The said facilities are supervised by the MSWDO of La Trinidad.

Aside from the daycare services, the children also have the supplementary feeding program (SFP), one of the main programs of the Department of Social Welfare and Development. The programs aim to help children with health and nutrition-related problems by serving hot and healthy meals/snacks to the children.

Lubas Proper Day Care Center was a national contender for the Search for the Most Orally Fit Day Care Center in 2012.

Clientele Groups

Solo Parents

CBMS Data shows that there are 94 solo parents in Barangay Lubas in 2010. This represents 8.33% of the total households in the Barangay. Of the total number, almost 70 percent or 65 were females and 30% or 29 were males.

By law, being a solo parent comes in ten possible instances as presented in the table below. Data shows that death of spouse is the main reason for being a solo parent with almost half with 42 of the solo parents. There were 16 recorded solo parents because they were abandoned by their spouse and another 16 unmarried mother/father who preferred to keep the child instead of other caring for him/her.



Republic of the Philippines
Province of Benguet
Municipality of La Trinidad
BARANGAY LUBAS

<i>Reasons For Being A Solo Parent</i>	<i>Male</i>	<i>Female</i>	<i>Total</i>	<i>%</i>
Death of Spouse	9	33	42	44.68%
Imprisonment of Spouse	1	0	1	1.06%
Mental or Physical Incapacity of Spouse	1	0	1	1.06%
Legal/De Facto Separation from Spouse for At least 1 Year	0	3	3	3.19%
Annulment of Marriage	1	1	2	2.13%
Abandonment of Spouse for At least One Year	8	8	16	17.02%
Unmarried Mother/Father Who Preferred to Keep the Child Instead of Others Caring for Her/Him	8	8	16	17.02%
Any Person who Solely Provides Parental Care and Support to a Child Provided he/she is a Duly Licensed Foster Parent of DSWD/Duly Appointed Legal Guardian by the Court Through Adoption/Legal Guardianship	0	1	1	1.06%
Other Reason	1	11	12	12.77%
<i>Total</i>	<i>29</i>	<i>65</i>	<i>94</i>	<i>100%</i>

Source: Community-Based Monitoring System 2010

Solo parents can also be by legal choice with 3 individuals who sought for legal or de facto separation from spouse and 2 were annulled from their previous marriages. Other reasons provided are imprisonment of spouse (1), mental or physical incapacity of spouse (1) and other reasons not specified (12). This is where personal choices fall into.

Persons with Disability

Persons with disability (PWDs) are among the clientele groups served by the social welfare sector. Disability refers to any restriction of lack of ability (resulting from an impairment) to perform an activity in the manner or within the range considered normal for a human being.

CBMS data records 65 PWDs in Lubas with 47 males and 18 females. This is 1.42 percent of the total population of the barangay. Breakdown of persons with disability by type is presented on the table below.

<i>Persons with Disability by Type</i>	<i>Male</i>	<i>Female</i>	<i>Total</i>	<i>%</i>
Total Blindness	3	0	3	4.62%
Partial Blindness	3	2	5	7.69%
Low Vision	1	1	2	3.08%
Totally Deaf	3	1	4	6.15%
Partially Deaf	3	1	4	6.15%
Hard of Hearing	5	3	8	12.31%
Oral Defect	4	0	4	6.15%
One Hand	2	0	2	3.08%
Mild Cerebral Palsy	2	1	3	4.62%
Regularly Intellectually Impaired	2	0	2	3.08%
Severely Intellectually Impaired	0	1	1	1.54%
Regularly Impaired by Mental Illness	1	0	1	1.54%
Severely Impaired by Mental Illness	2	1	3	4.62%
Regularly Multiple Impaired	1	0	1	1.54%
Others	15	7	22	33.85%
<i>Total</i>	<i>47</i>	<i>18</i>	<i>65</i>	<i>100.00%</i>

Source: Community-Based Monitoring System, 2010



Republic of the Philippines
Province of Benguet
Municipality of La Trinidad
BARANGAY LUBAS

Cause of Disability

Table below reveals the causes of disability of the 69 PWDs of the barangay. Illnesses are the main causes of disability with 31 cases or 47.69% of the total number of PWDs. There are 17 or 26.15 percent who were born with the disability. On the other hand, there were 8 or 13.85% caused by accidents. Nine (9) had other causes of disability.

<i>Cause of Disability</i>	<i>Male</i>	<i>Female</i>	<i>Total</i>	<i>%</i>
In-born	12	5	17	26.15%
Illness	22	9	31	47.69%
Accident	7	1	8	12.31%
Others	6	3	9	13.85%
			65	100%

Source: Community-Based Monitoring System, 2010

When asked if the PWDs have received any assistance, only ten (10) or 15 percent affirmed. Assistance availed were financial (3), medical assistance (4) and other forms like assistive devices (3).

<i>Assistance Received</i>	<i>Total</i>	<i>%</i>
Financial Assistance	3	4.62%
Medical Assistance	4	6.15%
Others	3	4.62%
<i>Total</i>	<i>10</i>	<i>15.39%</i>

Source: Community-Based Monitoring System, 2010

Seven (7) have availed assistance from government agencies, one (1) from an NGO and two (2) from others.

<i>Source of Assistance Received</i>	<i>#</i>	<i>%</i>
Government	7	10.77%
NGO	1	1.54%
Others	2	3.08%

Source: Community-Based Monitoring System, 2010

Senior Citizens

Senior citizen or elderly refers to any resident citizen of the Philippines at least sixty (60) years old. There were 121 senior citizens according to the CBMS 2010 which is 1.21% of the total population. More than 50 percent or 78 of these are males while 35.5% or 43 are females.

To acknowledge a senior citizen, she/he needs to secure an identification (ID) card from the Municipal Social Welfare and Development Office. Out of the 121 senior citizens, only 78 have IDs as presented on the table below. Furthermore, when asked who have used their IDs, only 31 or 39.74% affirmed.



Republic of the Philippines
Province of Benguet
Municipality of La Trinidad
BARANGAY LUBAS

<i>Senior Citizens</i>	<i>Male</i>	<i>Female</i>	<i>Total</i>	<i>%</i>
Members who was able to use his/her ID	20	11	31	39.74%
With Identification Card	50	28	78	64.46%
Without Identification Card	28	15	43	35.54%
<i>Total</i>	<i>78</i>	<i>43</i>	<i>121</i>	<i>100.00%</i>

Source: Community-Based Monitoring System, 2010

Access to Government Programs

There were 44.55% or 503 households who were able to benefit from the various types of Government programs. Health assistance has 302 recipients, representing 60.04%. Eighty six (86) households were recipient of Supplemental Feeding program, representing 17.10%. Fifty nine (59) households were beneficiaries of Philhealth for Indigents, representing 11.73%. From these programs, 96.42% of the recipients said that effects of the programs were good.

<i>Types of Programs Received/Availed by the HHs</i>	<i>#</i>	<i>%</i>
Recipient of CARP	0	0.00%
Philhealth for Indigents	59	11.73%
Supplemental Feeding Program	86	17.10%
Health Assistance Program	302	60.04%
Education/Scholarship Program	28	5.57%
Skills or Livelihood Training Program	6	1.19%
Housing Program	2	0.40%
Credit Program	17	3.38%
Other Types of Program	3	0.60%
<i>Total</i>	<i>503</i>	<i>100.00%</i>

Source: Community-Based Monitoring System, 2010

<i>Effect of the Programs</i>	<i>#</i>	<i>%</i>
Positive	485	96.42%
No Effect	13	2.58%
Negative Effect	5	0.99%
<i>Total</i>	<i>503</i>	<i>100.00%</i>

Source: Community-Based Monitoring System, 2010

Number of Poor Households and Pantawid Beneficiaries

In 2010, the DSWD through the National Household Targeting System for Poverty Reduction (NHTS-PR) conducted an enumeration to selected barangays or sitios, referred to as pockets of poverty in the municipality of La Trinidad including Barangay Lubas. The NHTSPR is the data management system of the government in identifying who and where the poor are in the Philippines, who shall be the potential recipients of social protection programs.



Republic of the Philippines
Province of Benguet
Municipality of La Trinidad
BARANGAY LUBAS

Data shows that the NHTSPR was able to assess 334 households in Lubas, identifying 67 poor households. Out of the identified poor households, 40 were registered as beneficiaries of the Pantawid Pamilyang Pilipino Program (4Ps).

4Ps is the flagship program of the government to combat poverty that is spearheaded by the DSWD. It is a poverty reduction strategy that provides grants to extremely poor households to improve their health, nutrition and education particularly of children aged 0-14 years old. The program started in 2012 in the barangay.

F. PUBLIC SAFETY

Peace and Order

The Philippine National Police of La Trinidad recorded 29 incidents of crime in Lubas in 2012. There were incidents of theft (6), other non-index crime (5), Child abuse (4), and physical injuries (4). Other incidents of crime were violence against women (4), vehicular accidents (4), special laws (1), and robbery (1).

<i>Victims of Crime</i>	<i>#</i>	<i>%</i>
Child Abuse	4	13.79%
Other Non-index	5	17.24%
Physical Injuries	4	13.79%
Robbery	1	3.45%
Theft	6	20.69%
Special Laws	1	3.45%
VAWC	4	13.79%
Vehicular Accidents	4	13.79%
<i>Total</i>	<i>29</i>	<i>100.00%</i>

Source: PNP-LT, 2012 Data

The Barangay have appointed eight (8) Tanods and another ten (10) Tanods are sponsored by the municipality. One Police Outpost is situated at Lubas Proper and is used by Barangay Tanods.

Calamity

As of 2010, there were 57 households who were affected by typhoons, representing 5.05% of the total households.



Republic of the Philippines
Province of Benguet
Municipality of La Trinidad
BARANGAY LUBAS

VI. ECONOMY

A. SOURCE OF INCOME

Entrepreneurial Activities

The table below shows that 308 households were engaged in entrepreneurial activities, which include agricultural activities, representing 27.28% of the total households. Most of them or 120 households were engaged in wholesale and retail trade activities with ₱91,046 average income annually. There were 91 households engaged in crop farming and gardening having an average annual income of ₱84,424.

<i>Entrepreneurial Activities by Income</i>	<i>Households</i>		<i>Income (₱)</i>		
	<i>#</i>	<i>%</i>	<i>Minimum</i>	<i>Average</i>	<i>Maximum</i>
Crop Farming and Gardening	91	8.06%	1,600	84,424	320,000
Livestock and Poultry Raising	19	1.68%	6,000	85,688	960,000
Fishing Activities	0	0	0	0	0
Forestry and Hunting Activities	0	0	0	0	0
Wholesale & Retail Trade Activities	120	10.63%	6,000	91,046	1,564,000
Manufacturing Activities	17	1.51%	1,500	35,375	108,000
Community, Social & Personal	8	0.71%	10,500	284,813	1,680,000
Transportation, Storage, and Communication Services	32	2.83%	12,000	140,288	480,000
Mining and Quarrying Activities	9	0.80%	20,000	73,822	200,000
Construction	5	0.44%	10,000	23,200	40,000
Other Activities	7	0.62%	25,000	89,714	240,000
<i>Total</i>	<i>308</i>				

Source: Community-Based Monitoring System, 2010

Some 32 households were engaged in transportation, storage and communication services with average income of ₱140,288 annually. Nineteen (19) households were engaged in livestock and poultry having an average annual income of ₱85,688. There were 17 households who were in manufacturing activities with ₱35,375 average annual income.

Salaries and Wages

There were 852 households who are wage earners, representing 75.47% of the total households. The average income received by households is ₱140,741.

<i>Salaries and Wages by Income</i>	<i>Households</i>		<i>Income (₱)</i>		
	<i>#</i>	<i>%</i>	<i>Minimum</i>	<i>Average</i>	<i>Maximum</i>
Salaries and Wages	852	75.47%	3,500	140,741	960,000

Source: Community-Based Monitoring System, 2010



Republic of the Philippines
Province of Benguet
Municipality of La Trinidad
BARANGAY LUBAS

Additional Sources of Income

A total of 716 households had other source of income aside from their main sources of income. There were 180 households who received remittances from Overseas Filipino workers with an average income of ₱144,620 annually. A number of 157 households had additional income from cash receipts, support, assistance and relief received from domestic sources having an average annual income of ₱52,638.

Eighty six (86) households received additional income from the net share of crops livestock and poultry raised by other households having an average income of ₱20,562 annually. Eighty two (82) households had additional sources of income from rentals received from non-agricultural lands, buildings, spaces and properties with ₱65,466 average annual income. There were 69 households who received pensions with an average annual income of ₱60,606.

<i>Additional Sources of Income</i>	<i>Number of HHs</i>	<i>Minimum Income</i>	<i>Average Income</i>	<i>Maximum Income</i>
Net Share of Crops, Livestock, and Poultry Raised by Other Households	86	1,000	20,562	180,000
Remittances from Overseas Filipino Workers	180	2,000	144,620	960,000
Receipts from Abroad	16	1,000	29,594	130,000
Receipts from Domestic Sources	157	1,000	52,638	396,000
Rentals Received	82	5,000	65,466	300,000
Interest Earned	13	100	135,211	750,000
Pension and Retirement Received	69	1,000	60,606	310,424
Dividends from Investment	36	40	1,815	40,800
Other Sources	77	200	30,772	200,000
<i>Total</i>	<i>716</i>			

Source: Community-Based Monitoring System, 2010

Annual per Capita Income

There were 80 households whose incomes were below the poverty threshold (15,820). The annual per capita poverty threshold is the minimum annual income required to be spent by each member of a family to satisfy their nutritional requirements and other basic needs.

Agriculture

Ninety one (91) households were engaged in agriculture excluding farm laborers. Out of 91, 70 were owners of agricultural land and 13 households were renting the agricultural land they were working on. The data below shows that most of the households don't possess much of agricultural land.

<i>Tenure Status(Agricultural Land)</i>	<i>#</i>	<i>%</i>
Owned or owner-like possession	70	76.92%
Rent	13	14.29%
Not owned but with consent of owner	7	7.69%
Other	1	1.10%
<i>Total</i>	<i>91</i>	<i>100.00%</i>

Source: Community-Based Monitoring System 2010



Republic of the Philippines
Province of Benguet
Municipality of La Trinidad
BARANGAY LUBAS

<i>Area of Agricultural Land</i>	<i>#</i>	<i>%</i>
Less than 1 Hectare	79	86.81%
1-3 Hectares	12	13.19%
3.1 - 5 Hectares	0	0.00%
More than 5 Hectares	0	0.00%
Not Specified	0	0.00%
<i>Total</i>	91	100%

Source: Community-Based Monitoring System 2010

Agricultural Implements

As shown in the table below, insecticide or pesticide sprayer is the most that farmers use in agricultural equipment representing 57.14%. Since highland vegetables is the most produce followed by Strawberry, resulting to the dominant use of the said equipment. This is followed by irrigation pump which is used by 21 farmers, representing 20%.

<i>Ownership of Equipment or Facilities</i>	<i>#</i>	<i>%</i>
Yes	95	90.48%
No	10	9.52%
<i>Type of Agricultural Equipment or Facilities Used</i>	<i>#</i>	<i>%</i>
Beast of Burden	0	0.00%
Plow	1	0.95%
Harrow	2	1.90%
Mower	1	0.95%
Thresher or Corn Sheller	0	0.00%
Insecticide or Pesticide Sprayer	60	57.14%
Farm Tractor	0	0.00%
Hand Tractor	8	7.62%
Turtle or Mud boat	1	0.95%
Planter or Transplanter or Dryers	0	0.00%
Mechanical Dryer	0	0.00%
Multipurpose Drying Pavement	0	0.00%
Rice Mill/Corn Mill/Feed Mill	0	0.00%
Harvester, Any Crop	0	0.00%
Warehouse Granary	1	0.95%
Farm Shed	1	0.95%
Irrigation Pump	21	20.00%
Other Equipments/Facilities	9	8.57%

Source: Community-Based Monitoring System 2010

Livestock Raising

It can be noted in the table below that Hog for Fattening is the most that the household raise having a high percentage rate of 80% followed by sow with 3 or 15%. The volume of production of live animals is 71 heads and Meat is 3,466 kilograms.

<i>Livestock Being Raised by Households</i>	<i>#</i>	<i>%</i>
Hog for Fattening	16	80.00%
Sow	3	15.00%
Chicken	1	5.00%
<i>Total</i>	20	100.00%

Source: Community-Based Monitoring System 2010



Republic of the Philippines
Province of Benguet
Municipality of La Trinidad
BARANGAY LUBAS

<i>Volume of Production of Livestock/Poultry Raised</i>	<i>Volume of Production</i>
Live animals	71 heads
Meat	3466 kgs.
Milk	0 liters
Eggs	0 pcs.

Source: Community-Based Monitoring System 2010

Fishing

There is no fishing activity in the community or barangay.

B. EMPLOYMENT

Labor Force

The potential labor force of Lubas is at 2,896 persons with 1,420 males and 1,476 females. The actual labor force is 1,720 persons, which does not include those unable, not available and not looking for work (such as students, housewives, PWDs, retired persons and seasonal workers). Out of 1,720, a total of 1,651 persons were employed, wherein 1,624 were 15-64 years old, 23 persons were 65 years old and above, and 4 persons were below 14 year old. This garnered an employment rate of 95.99%. There were 69 unemployed persons with 29 males and 40 females, representing 4.01%.

<i>Labor Force</i>	<i>Male</i>	<i>Female</i>	<i>Total</i>	<i>%</i>
Potential Labor Force (15-64 years old)	1,420	1,476	2,896	
Actual Labor Force				
Employed	1,037	563	1,651	95.99%
<i>Employed Members (15-64 years old)</i>	1,021	603	1,624	94.42%
<i>Employed Members (14 Years Old and Below)</i>	2	2	4	0.23%
<i>Employed Members (65 Years old and Above)</i>	14	9	23	1.34%
Unemployed Members (Looking for Work)	29	40	69	4.01%
Actual Labor Force	1,066	654	1,720	100.00%

Source: Community-Based Monitoring System 2010

Nature of Employment

The table shows that almost half of the employed labor force in the community is employed in short-term, seasonal, or casual basis. This is represented by 49.73% or 821 individuals wherein 528 were males and 293 were females. Persons employed permanently accounted for 593 individuals or 35.92% with 347 males and 246 females.

<i>Nature of Employment</i>	<i>Male</i>	<i>Female</i>	<i>Total</i>	<i>%</i>
Permanent	347	246	593	35.92%
Short-term, seasonal, casual	528	293	821	49.73%
Worked on different jobs on day to day/week to week	162	75	237	14.35%

Source: Community-Based Monitoring System 2010



Republic of the Philippines
Province of Benguet
Municipality of La Trinidad
BARANGAY LUBAS

Employment by Sector

The table shows that construction is the most common work where the community is being employed in, this is represented with a total of 422 or 25.56%. There are 230 individuals who are employed under agriculture/mining/forestry. Others are in wholesale and retail trade (153), transportation and communication (143), public administration and defense (142), community, social activities (119) and others as presented on the table below.

<i>Employment by Sector/Industry</i>	<i>Male</i>	<i>Female</i>	<i>Total</i>	<i>%</i>
Agriculture, Mining, and Forestry	190	40	230	13.93%
Fishing	7	6	13	0.79%
Mining and Quarrying	53	2	55	3.33%
Manufacturing	23	39	62	3.76%
Electricity, Gas, and Water Supply	34	6	40	2.42%
Construction	211	5	216	13.08%
Wholesale & Retail Trade, Vehicle Repair	123	211	334	20.23%
Hotel and Restaurants	32	30	62	3.76%
Transportation, Storage, and Communication	128	12	140	8.48%
Financial Intermediation	3	15	18	1.09%
Real Estate, Renting, and Business Activities	15	7	22	1.33%
Public Administration and Defense	58	8	66	4.00%
Education	24	84	108	6.54%
Health and Social Work	19	33	52	3.15%
Other Community, Social/Personal Activities	52	45	97	5.88%
Private HHs with Employed Persons	60	67	127	7.69%
Extra- territorial Organization	5	4	9	0.55%
<i>Total</i>	<i>1,037</i>	<i>614</i>	<i>1,651</i>	<i>100.00%</i>

Source: Community-Based Monitoring System 2010

Primary Occupation or Business

The above table shows that most of the residents are service workers and shop market sales workers with 360 individuals, followed by laborers and unskilled workers with 358 individuals, and trades and related workers with 250 individuals and the others belong to the different fields of work.

It indicates that those who are capable of working are employed in the different areas of work to raise the level of living and to sustain the family needs and educational needs.

<i>Type of Primary Occupation or Business</i>	<i>Male</i>	<i>Female</i>	<i>Total</i>	<i>%</i>
Officials of Gov't and Special-Interest Organizations, Corporate Executives, Managers, Managing Proprietors & Supervisors	12	14	26	1.58%
Physical, Mathematical & Engineering Science Professionals	73	120	193	11.69%
Technician and Associate Professionals	31	7	38	2.30%
Clerks	6	13	19	1.15%
Service Workers and Shop and Market Sales Workers	167	193	360	21.81%
Farmers, Forestry Workers and Fishermen	171	23	194	11.75%
Trades and Related Workers	190	60	250	15.14%
Plant and Machine Operators and Assemblers	27	4	31	1.88%
Laborers and Unskilled Workers	250	108	358	21.68%
Special Occupations	110	72	182	11.02%
<i>Total</i>	<i>1,037</i>	<i>614</i>	<i>1,651</i>	<i>100.00%</i>

Source: Community-Based Monitoring System 2010



Republic of the Philippines
Province of Benguet
Municipality of La Trinidad
BARANGAY LUBAS

Class of Worker

The table shows that 43.61% or 720 of the total individuals worked for a private establishment, 20.47% or 338 worked for a household, 19.14% or 315 were self-employed, 1.76% are employer in own family operated farm or business and others were with or without pay on own family operated farm or business.

<i>Class of Worker</i>	<i>Male</i>	<i>Female</i>	<i>Total</i>	<i>%</i>
Worked for a household	238	100	338	20.47%
Worked for a private establishment	492	228	720	43.61%
Worked for government/government corporation	100	93	193	11.69%
Self-employed without employees	159	157	316	19.14%
Employer in own family-operated farm or business	17	12	29	1.76%
Worked with pay on own family operated farm/business	11	1	12	0.73%
Work without pay on own family operated farm/business	20	23	43	2.60%
<i>Total</i>	<i>1,037</i>	<i>614</i>	<i>1,651</i>	<i>100.00%</i>

Source: Community-Based Monitoring System 2010

Professionals

From the employed sector in Lubas, there were 221 recorded professionals. The table below shows that most of the members of professional in the community are Teachers followed by Nurses and Criminologists.

<i>Members Who Are Professionals</i>	<i>Male</i>	<i>Female</i>	<i>Total</i>	<i>%</i>
Agriculturist	5	1	6	2.71%
Attorney-at-Law	3	0	3	1.36%
Certified Public Accountant	3	2	5	2.26%
Chemical Engineer	1	0	1	0.45%
Civil Engineer	6	2	8	3.62%
Criminologist	28	4	32	14.48%
Elect. and Comm. Engineer	3	0	3	1.36%
Forester	4	0	4	1.81%
Geodetic Engineer	1	0	1	0.45%
Librarian	1	1	2	0.90%
Mechanical Engineer	2	0	2	0.90%
Medical Doctor	1	0	1	0.45%
Medical Technologist	1	0	1	0.45%
Midwife	2	1	3	1.36%
Mining Engineer	1	0	1	0.45%
Nurse	24	15	39	17.65%
Pharmacist	1	1	2	0.90%
Physical Therapist	1	0	1	0.45%
Professional Agricultural Engineer	1	0	1	0.45%
Professional Teacher	71	25	96	43.44%
Social Worker	1	3	4	1.81%
Veterinarian	1	1	2	0.90%
Others	3	0	3	1.36%

Source: Community-Based Monitoring System 2010



Republic of the Philippines
Province of Benguet
Municipality of La Trinidad
BARANGAY LUBAS

Unemployment and Job Search Method

Table below shows type job searched method availed by 69 unemployed residents of Lubas. Thirty (30) persons approached their relatives or friends to inquire for job vacancy, representing 43.48%. There were 15 persons who registered in private employment agencies, representing 21.74%. Twelve (12) unemployed people approached the employer directly, representing 17.39%.

<i>Job Search Method</i>	<i>Male</i>	<i>Female</i>	<i>Total</i>	<i>%</i>
Registered in public employment agency	1	5	6	8.70%
Registered in private employment agency	7	8	15	21.74%
Approached employer directly	2	10	12	17.39%
Approached relatives/friends	17	13	30	43.48%
Placed or answered private advertisements	2	3	5	7.25%
Others	0	1	1	1.45%
<i>Total</i>	<i>29</i>	<i>40</i>	<i>69</i>	<i>100.00%</i>

Source: Community-Based Monitoring System 2010

Reasons for not Searching for Work

There were 1,203 members of the labor force who are not looking for work, where 370 were males and 833 were females, representing 41.54%. Most of them were students, 242 males and 272 females, representing 42.73%. This is followed by 485 persons who are not in search for work due to housekeeping duties consisting 25 males and 460 females, representing 40.32%.

<i>Reasons For Not Looking For Work</i>	<i>Male</i>	<i>Female</i>	<i>Total</i>	<i>%</i>
Believes no work is available	6	3	9	0.75%
Awaiting results of previous job application	15	22	37	3.08%
Temporary illness/disability	15	8	23	1.91%
Bad Weather	0	0	0	0.00%
Waiting for rehire/job recall	4	3	7	0.58%
Too young/old, retired, permanently disabled	43	39	82	6.82%
Housekeeping	25	460	485	40.32%
Schooling	242	272	514	42.73%
Other reasons	20	26	46	3.82%
<i>Total</i>	<i>370</i>	<i>833</i>	<i>1,203</i>	<i>100.00%</i>

Source: Community-Based Monitoring System 2010

Overseas Employment

The table shows that of the total 140 individuals working abroad, 82 are females and 58 are males. Hong Kong has the largest OFW with a total number of 20 or 14.29% followed by Taiwan with 16 or 11.43%. Korea accommodated 13 OFWs, representing 9.29%. United Kingdom hired 11 OFWs, representing 7.86%.



Republic of the Philippines
Province of Benguet
Municipality of La Trinidad
BARANGAY LUBAS

<i>Country of Work</i>	<i>#</i>	<i>%</i>	<i>Country of Work</i>	<i>#</i>	<i>%</i>
Australia	4	2.86%	Malaysia	5	3.57%
Austria	1	0.71%	Mexico	1	0.71%
Bahrain	1	0.71%	Oman	1	0.71%
Brunei Darussalam	1	0.71%	Qatar	2	1.43%
Canada	7	5.00%	Russian Federation	1	0.71%
China	3	2.14%	Saudi Arabia	5	3.57%
Cyprus	2	1.43%	Singapore	4	2.86%
Hong Kong	20	14.29%	Spain	1	0.71%
Israel	8	5.71%	Taiwan	16	11.43%
Italy	2	1.43%	United Arab Emirates	8	5.71%
Japan	7	5.00%	United Kingdom	11	7.86%
Korea	13	9.29%	United States of America	6	4.29%
Kuwait	3	2.14%	Others	4	2.86%
Libyan Arab Jamahiriya	1	0.71%			
Macao	2	1.43%	<i>Total</i>	<i>140</i>	<i>100.00%</i>

Source: Community-Based Monitoring System 2010

Kind of Work Abroad

As shown in the table below, the kind of work of OFWs abroad is mostly service workers and shop and market sales workers represented by a total of 102 or 72.86%. There were 14 individuals who are physical, mathematical and engineering science professionals abroad, accounted to 10%.

<i>Kind of Work in Abroad</i>	<i>Male</i>	<i>Female</i>	<i>Total</i>	<i>%</i>
Officials of Gov't and Special-Interest Organizations, Corporate Executives, Managers, Managing Proprietors & Supervisors	1	0	1	0.71%
Physical, Mathematical and Engineering Science Professionals	9	5	14	10.00%
Technician and Associate Professionals	1	2	3	2.14%
Clerks	0	0	0	0.00%
Service Workers and Shop and Market Sales Workers	67	35	102	72.86%
Farmers, Forestry Workers and Fishermen	0	1	1	0.71%
Trades and Related Workers	3	2	5	3.57%
Plant and Machine Operators and Assemblers	0	4	4	2.86%
Laborers and Unskilled Workers	1	2	3	2.14%
Special Occupations	0	7	7	5.00%
<i>Total</i>	<i>82</i>	<i>58</i>	<i>140</i>	<i>100.00%</i>

Source: Community-Based Monitoring System 2010

C. INFRASTRUCTURE AND UTILITIES

Electricity

It is noted in the table above that of the 1,129 households, almost all or 98.76% of the households are connected to electricity distributed in the barangay. The only electric company that is present in the barangay is the Benguet Electric Cooperative, Inc. The average monthly electrical consumption is Php469.00.



Republic of the Philippines
Province of Benguet
Municipality of La Trinidad
BARANGAY LUBAS

Number of Households with Electricity Connections: 1,115 (98.76% of total HHs)
Number of Households w/o Electricity Connections: 14 (1.24% of the HHs)
Average Monthly Electric Bill : P469.00

Source of Electricity in the House/Building	#	%
Electric Company	1,114	98.67%
Generator	2	0.18%
Solar	0	0.00%
Battery	0	0.00%
Others	1	0.09%
None	12	
<i>Total</i>	<i>1,129</i>	

Source: Community-Based Monitoring System 2010

Social Media

Barangay Lubas has a website, www.lubasltb.wordpress.com and a Facebook account, lubasltb@yahoo.com. These media is used to connect with the wider society. Reports, plans and accomplishment of the barangay are posted on these sites.

Barangay Newspaper

The barangay publishes at least one newspaper every year to support the program of the national government on transparency in governance. The first issue was released in 2012 and another was published in 2013.

The newspaper contains news and feature articles on barangay reports and other accomplishments of the barangay.

Access to Safe Drinking Water

The table shows that 428 or 37.91% of the households are dependent to bottled water for drinking. It shows also that 328 or 29.05% tap their water from the La Trinidad Water District. One hundred eighty five (185) households share water connection to other households, representing 16.39%.

Source of Drinking Water	#	%
Community Water System-own	328	29.05%
Community Water System-shared	185	16.39%
Deep Well-own	5	0.44%
Deep Well-shared	28	2.48%
Artesian Well-own	0	0.00%
Artesian Well-shared	0	0.00%
Dug/Shallow Well-own	0	0.00%
Dug/Shallow Well-shared	0	0.00%



Republic of the Philippines
Province of Benguet
Municipality of La Trinidad
BARANGAY LUBAS

River, Stream, Lake, Spring	148	13.11%
Bottled Water	428	37.91%
Tanker Truck/Peddler	5	0.44%
Others	2	0.18%
<i>Total</i>	<i>1,129</i>	<i>100.00%</i>

Source: Community-Based Monitoring System 2010

The table shows that the distance of source of drinking water in the community is mostly within the premises.

<i>Distance of Source of Drinking Water</i>	<i>#</i>	<i>%</i>
Within Premises	500	44.29%
Outside Premises But 250 Meters/Less	129	11.43%
251 Meters or More	46	4.07%
Don't Know	21	1.86%
Not Stated	433	38.35%
<i>Total</i>	<i>1,129</i>	<i>100.00%</i>

Source: Community-Based Monitoring System 2010

Domestic Water System

From the record of the La Trinidad Water District as of 2013, a total of 726 households had connection to their domestic water system.

Roads

The road in the community is narrow or “one way”. Though the narrow road is cemented, road widening and concreting is on-going starting from Tawang. The terrain of the road is stiff and zigzag. It means then that there are so much blind spots, thus there is a need for drivers to be alert and careful while driving.

Name of Road	Length (km)	Road Row (m)	Areas of Jurisdiction	Remarks
Bayan-Park-Ambiong-Lubas-Tawang Rd.	6.962	4.000	Provincial	Concrete/Gravel/Dirt
Pinespark-Lubas Proper Road	1.364	2.770	Barangay	Concrete/Gravel
Lubas-Lamut Road	1.701	2.780	Barangay	Gravel

Source: CLUP 2000-10 & 2013-2023

Cemetery

Barangay Lubas has one public cemetery located at Sitio Rocky Side 1. This cemetery is owned by the LGU of La Trinidad but its administration is given to the barangay. The barangay limit burials only to its immediate residents.



Republic of the Philippines
Province of Benguet
Municipality of La Trinidad
BARANGAY LUBAS

V. GOVERNANCE

Vision

We envision our Barangay to be united and dynamic, to achieve political maturity and agricultural moderation sustained by our natural resources and the residents who are industrious, humble, peace loving, law abiding and God loving people.

Mission

As one community, we commit ourselves to have a higher sustainable economic, ecologically balanced environment and equitable access of resources and services.

Goals

- Promote good governance
- Increase agricultural productivity
- Preservation and promotion of tribal culture
- Transparency
- Strict implementation of Barangay Laws
- Implementation of government initiated program
- Instill the importance of living in clean and green environment
- Utilization of available resources within the Barangay and to encourage external sourcing of resources.

CBMS Indicators of Poverty

Access to safe water is the most felt problem of the residents in Lubas. There were 124 households who do not have access to safe drinking water, where in most are residents of Guitley, Pipingew, and Proper Lubas.

There were also households who have low income where 22 households reside in Inselbeg, 21 in Proper Lubas, and 18 in Rocky Side 2.

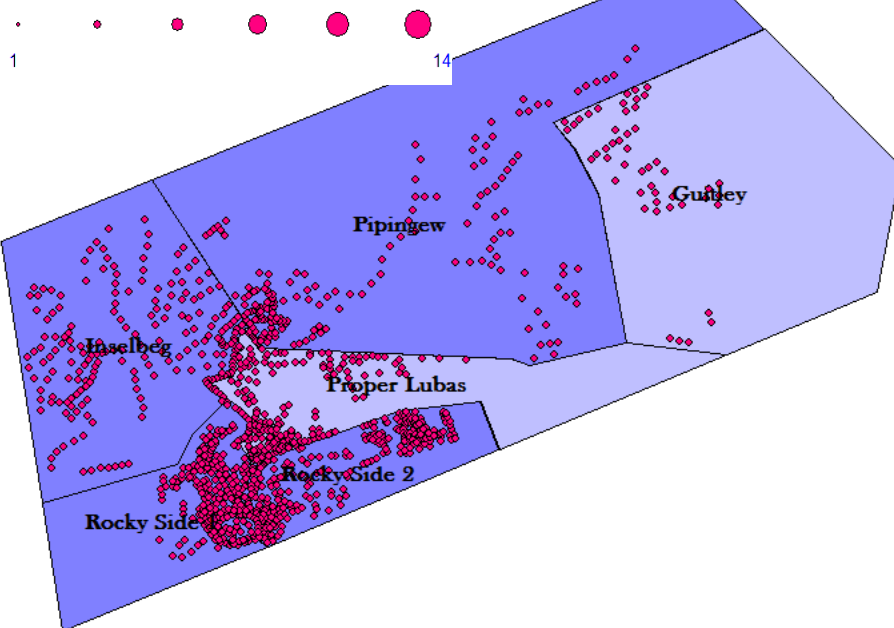
Unemployment is another felt problem in the community with 65 unemployed individuals. Most are resident of Proper Lubas, Rocky Side 2, and Rocky Side 1.



Republic of the Philippines
Province of Benguet
Municipality of La Trinidad
BARANGAY LUBAS

UNMET NEEDS

HHs w/ number of Unmet Needs



Poverty Indicators/Sitio	Inselbeg	Rocky Side 1	Rocky Side 2	Proper Lubas	Pipingew	Guitley	Total
A. EDUCATION							
Children Not Attending E/S	3	6	3	1	2	3	18
Children Not Attending High School	11	11	14	4	6	2	48
B. HEALTH & NUTRITION							
Children (0-5 years old) who died	0	1	2	1	0	0	4
Women who Died	0	0	0	0	0	0	0
Malnourished Children	1	0	0	0	0	0	1
C. HOUSING							
HH Who are Squatters	2	0	3	0	1	0	6
HH in Makeshift Housing	0	0	2	0	2	2	6
D. INCOME & LIVELIHOOD							
HH w/ incomes Below Poverty Threshold	22	8	18	21	1	10	80
HH w/ incomes Below Food Threshold	7	5	8	7	1	9	37
HH who Experienced Hunger	0	0	0	0	0	0	0
Unemployed	7	13	15	19	9	2	65
E. WATER & SANITATION							
HH without Access to Safe Water	8	2	10	26	32	46	124
HH with No Sanitary Toilet	1	0	3	6	5	8	23

Source: CBMS 2010, as verified by Barangay Officials in 2012

Special thanks to Ms. Lilia Rose Say-awen and Ms. Sheila Marie Cayanan, students of Master's Degree at Benguet State University for preparing this document, and to Ms. Sally C. Sacpa for the collated CBMS data.